

BUILT-IN INDUCTION HOB

HONEY COMB

EKWI 3740.0 S

Profession+

Features:

- 9-level power controls 'glideControl'
- Automatic booster cooking phase
- Residual heat indicators
- Minute minder for up to 99 minutes with switch-off feature
- Central switch-off control
- Holiday shut-down device (limiting operation duration time)
- Under-counter ventilation
- 1 sensor touch honeycomb included
- Without frame for flush-fitting installation

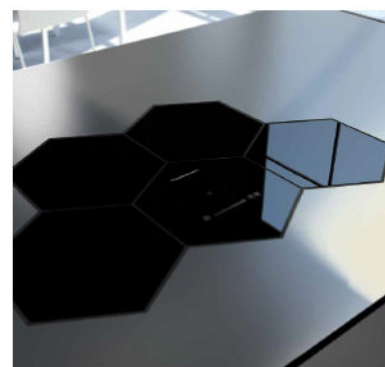
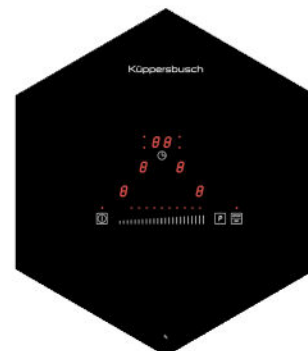
Technical data:

- Power for 2 cooking zone Ø 20 cm : 2.3 kW (3 kW*)
- Power for 2 cooking zone Ø 16 cm : 1.1 kW (1.4 kW*)

*with power booster setting

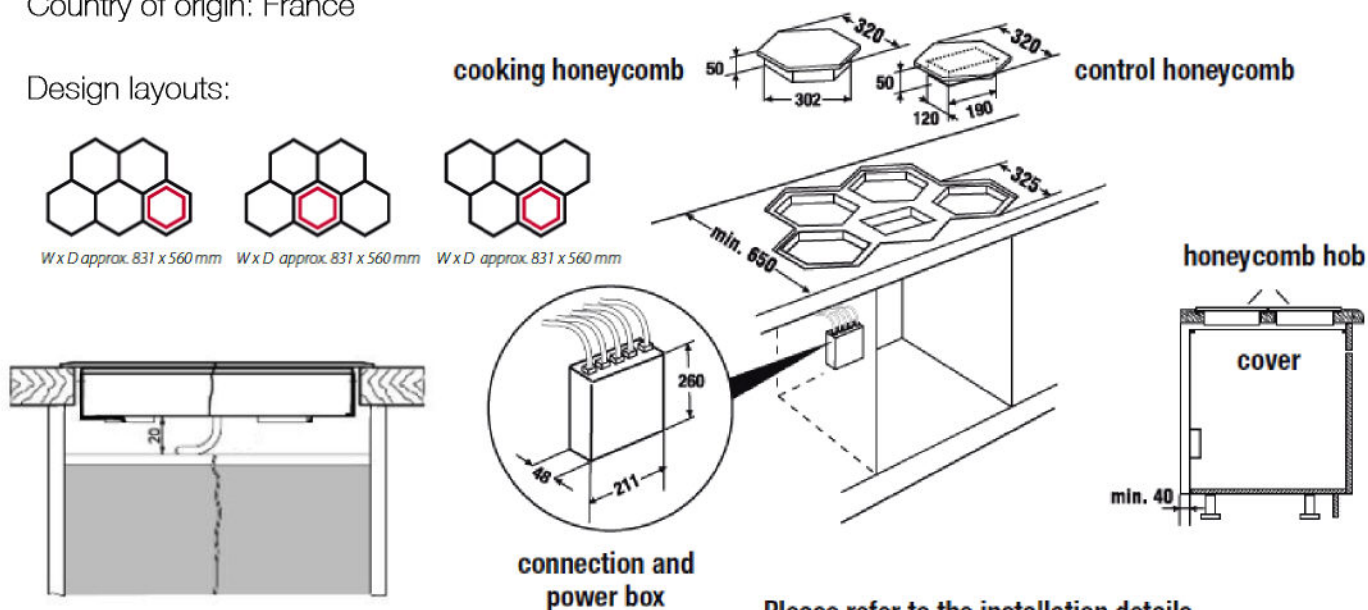
- Electrical connection : 7.4 kW (40A spur)
- Appliance dimensions : approx. W320 x D320 mm
- Niche dimensions : see building-in diagrams
- Under-counter ventilation height : 20 mm
- Length of connection cable : 1.5 metres

Küppersbusch
FÜR KÜCHEN MIT STIL



Country of origin: France

Design layouts:



Please refer to the installation details.



信興電工工程有限公司

Shun Hing Electric Works & Engineering Co., Ltd.